



OTCQX: DYNR

Corporate Presentation

MARCH 2025

A Junior Gold Producer Poised for
Optimization and Growth



Cautionary Note



Cautionary Note to U.S. Investors

The United States Securities and Exchange Commission limits disclosure for U.S. reporting purposes to mineral deposits that a company can economically and legally extract or produce. We use certain terms on this web site, such as “reserves”, “resources”, “geologic resources”, “proven”, “probable”, “measured”, “indicated”, or “inferred”, which may not be consistent with the reserve definitions established by the SEC. U.S. Investors are urged to consider closely the disclosure in our latest Annual Report on Form 10-K. You can review and obtain copies of these filings from the SEC’s website or by following links on this website.

This presentation contains information with respect to adjacent or similar mineral properties in respect of which the Company has no interest or rights to explore or mine. The Company advises that the U.S. Securities and Exchange Commission’s mining guidelines prohibit information of this type in reports filed with the SEC. Readers are cautioned that the Company has no interest in or right to acquire any interest in any such adjacent or similar properties, and that mineral deposits on adjacent or similar properties are not indicative of mineral deposits on the Company’s properties.

The information contained in this presentation is as of the date indicated and, to our knowledge, was timely and accurate when posted. The Company undertakes no obligation to update or remove outdated information other than as required by applicable law or regulation.

DynaResource Inc. is publicly listed on the OTCQX exchange under the symbol DYNR and complies with all SEC filings which can be found on our website www.dynaresource.com.

DynaResource Overview

A Junior Gold Producer Poised for Optimization and Growth



San Jose de Gracia – Flagship High-Grade Gold and Silver Mine

- District scale project consisting of 33 contiguous concessions totaling over 10,000 ha
- Historical mining of ~1Moz in 1890-1910 with bonanza grades of ~1-2 oz/t (30-60 g/t)
- Modern exploration commenced in the 1990s
- Small scale gold producer with 9 years operating history

Located in the World Class Mining District of Mexico

- Located 235 miles northwest of Mazatlán, Mexico
- In the center of the Sierra Madre Occidental geological zone which has produced over 25Moz of gold since 2010
- Property can be accessed via secondary road or by gravel airstrip

Operational Overview

- Production growth - 10,000 gold oz/yr (100tpd) in 2016 to 25,500 ozs (800tpd) in 2024
- Conventional cut and fill mining and flotation mill to produce a high-value gold concentrate trucked to Manzanillo and sold 100% offtake agreement to Ocean Partners
- Targeting production of approx. 27,000-30,000 gold ounces in 2025

Geography and Mineralization

- The project includes highly prospective geology and a Historical Mineral Resource Estimate (2012) of approximately 1.1M ozs of gold
- Updated Mineral Resource Estimate to be published in Q1 2025
- All mining concessions were converted in 2006 into 50-year mining concessions

Investment Thesis: Why DynaResource?



A New, Emerging Gold Producer with Significant Exploration Potential

Resource Redefinition & Growth
+1M oz Potential

- **Updated Mineral Resource Estimate expected in late Q1 2025**
- Near mine Mineral Resource growth potential at all key veins (Tres Amigos, San Pablo, Mochomera) open laterally and at depth
- Long-term District exploration **potential 1Moz** including La Haciendita target containing historical workings with **high-grade chip samples**

Optimizing for Profitability

- Focus on optimizing operations to improve profitability at the mine and mill
- Capital investments in the mill, such as new vibrating screen and Falcon concentrator, aimed at improving grades and recoveries
- Significant capital investment planned for first half of 2025

Cost Reduction

- Cost cutting efforts over last 6 months resulting in progressively improved operating margins – positive operating and net income expected for Q4 2024
- **2025 AISC target \$1,850-\$2,050 per ounce produced**
- **2025 Production Guidance of 27 – 30koz Au w/ long-term target of 50koz**

New Focused and Lean Management Team

- New Corporate leadership in late 2024 has extensive experience mining in Latin America and Mexico specifically
- New Mine leadership including GM with 30 years experience (including 10 years at San Dimas Mine in Tayoltita, Mexico)

Key 2025 Catalysts

Significant News Flow in Next 12 Months



Q4 2025

Updated Resource Estimate

Update resource estimate for 2025 drill campaign

Q3 2025

IPO on Major Exchange

Uplist to Major North American stock exchange

Q2 2025

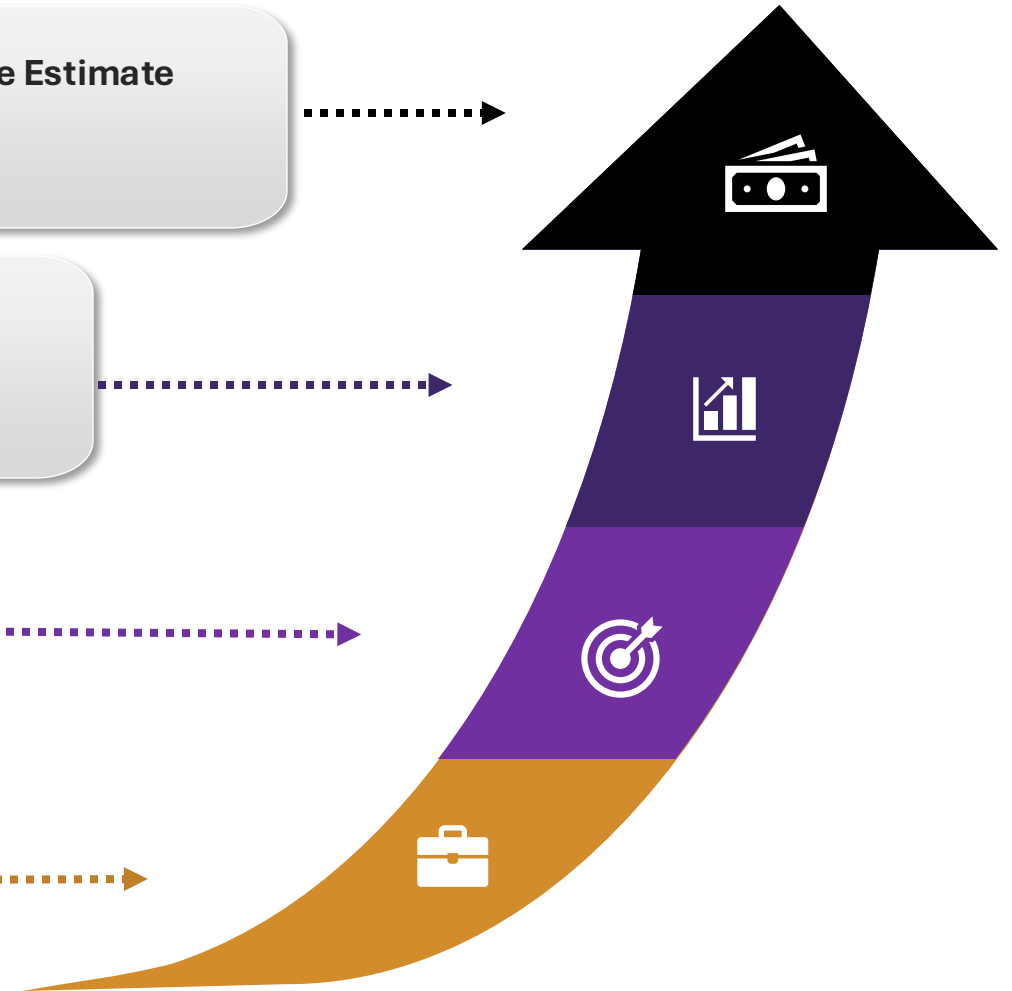
Exploration Drilling

Initial results of new drill campaign Q4 2024 to Q4 2025

Q1 2025

Resource Estimate

Updated Mineral Resource Estimate in accordance with SEC SK-1300 and NI 43-101



2025 Outlook & Guidance



Production + Operations

- As the optimization program continues at San Jose de Gracia we expected continued production growth in 2025 greater than 10% year over year
- Enhanced focus on underground mine development and introduction of tailored mining methods (long hole)
- **2025 gold production guidance of 27,000 to 30,000 gold ounces**

Financial

- Continued efforts to decrease direct operating costs through decreasing electricity costs, mine improvements and prudent management
- Improved revenue through better recoveries and improved grade control and in blasting and mining
- **Targeted All-In Sustaining Costs (AISC) of \$1,850-\$2,050 per ounce produced**
- **Sustaining capital expenditures (Capex) of \$4.8-5.8 million**

Exploration

- Strong new exploration program to begin Q2 2025 both in mine to extend working deposits and regional for long term resource growth
- Near mine and regional exploration is expected to bolster resource estimates beyond pending 2025 estimate and is aimed at uncovering additional high-grade zones mineralization is currently indicating
- **Planned exploration expenditures of \$2.5-3 million**

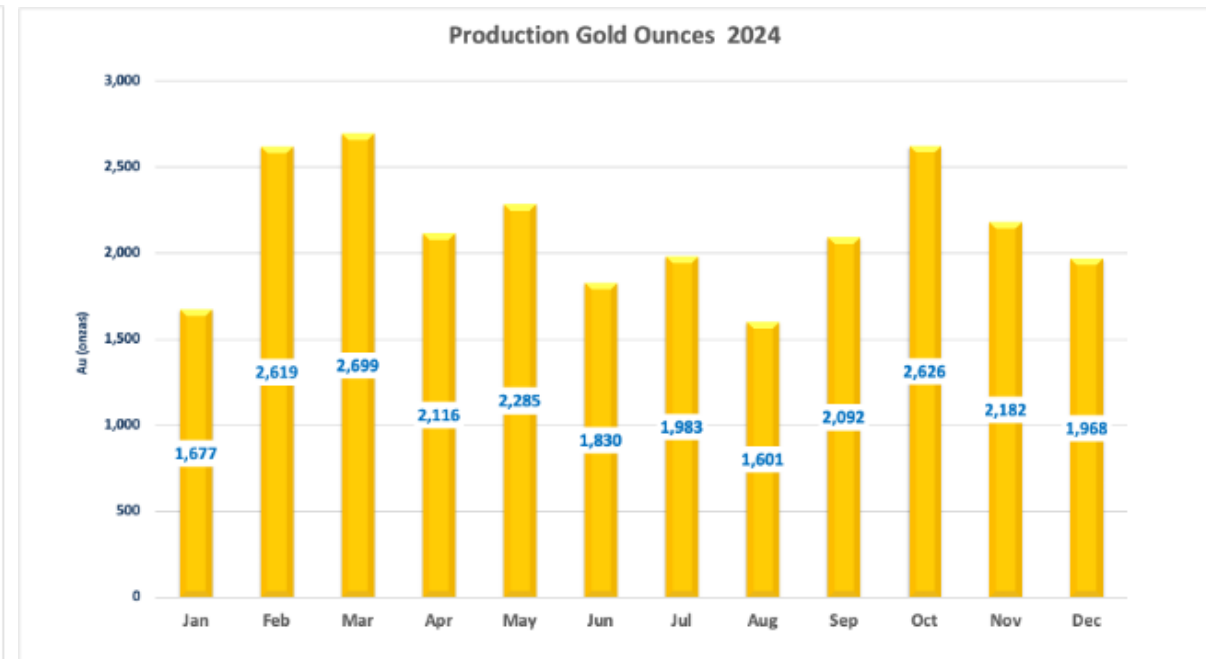
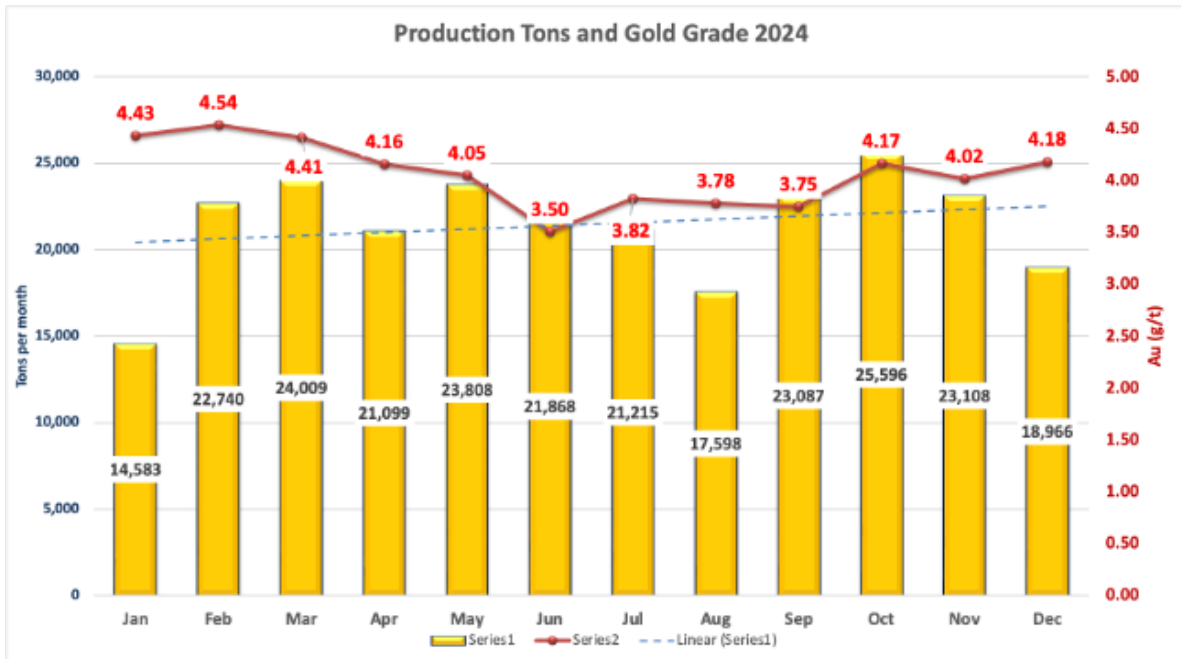
Mineral Resource Estimate

- Formalize Mineral Resource base to provide greater clarity on the project's economics and development potential
- Historical Mineral Resource Estimate (MRE) was from 2012 so the company is currently completing a new updated MRE to formalize mine plan and help target exploration program.

Operations Update



- 2024 full year production of 25,677 ounces of gold fell within the Company’s updated guidance
- Average gold grades demonstrating steady improvements upwards of 4 g/t gold
- Mill reached over 800 tpd multiple times in the last half of 2024
- Plant has been operating at higher throughput levels since the installation of a new vibrating screen and other improvements in 2024 with additional planned capital investment in 2025
- **2025 production guidance 27,000-30,000 gold ounces**



Sierra Madre Occidental Gold Belt

San Jose de Gracia Located on Trend of Prolific Geological Region



Geology – Mineable Inventory

Block Model of Existing Mine Deposits and Gold Grades

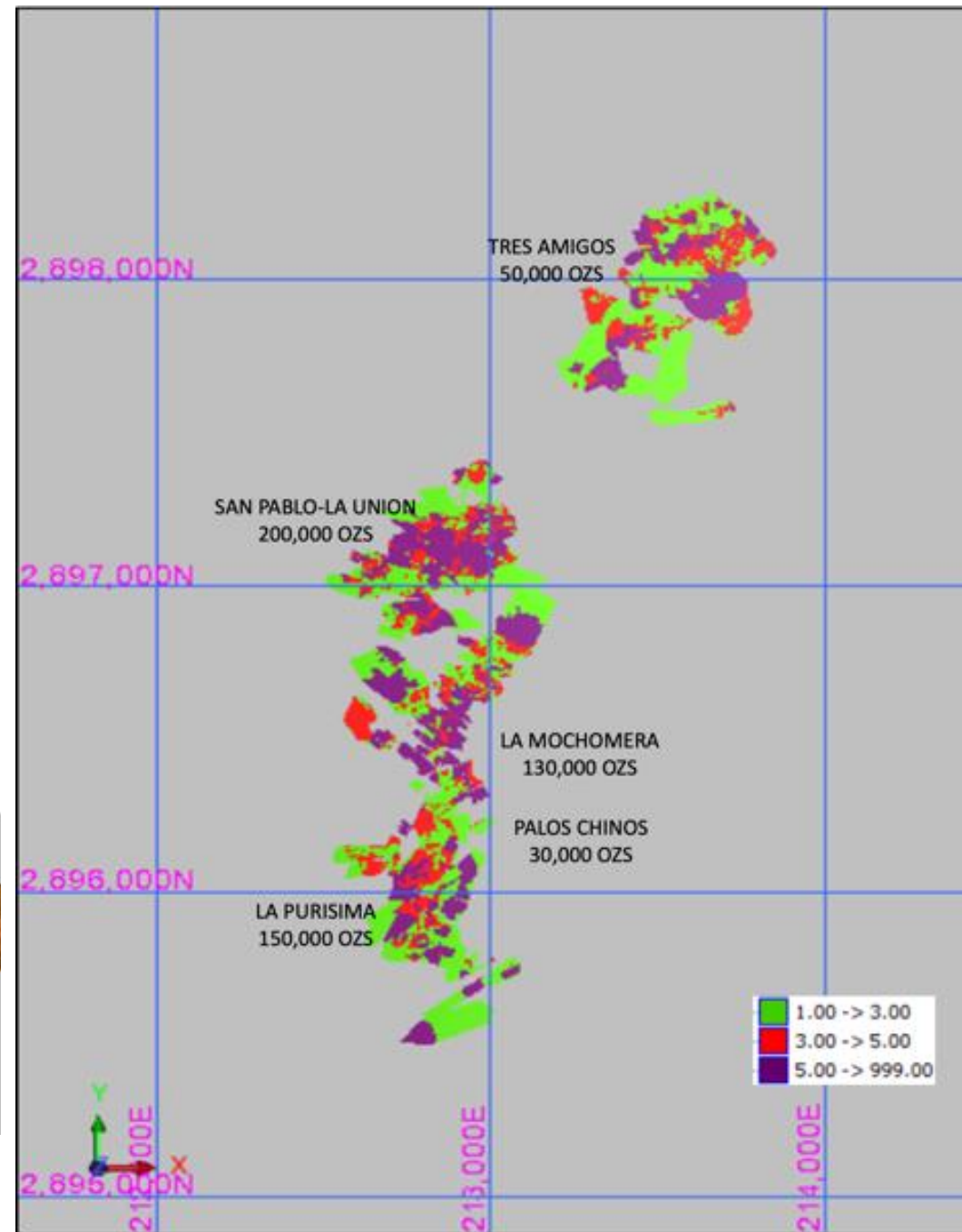
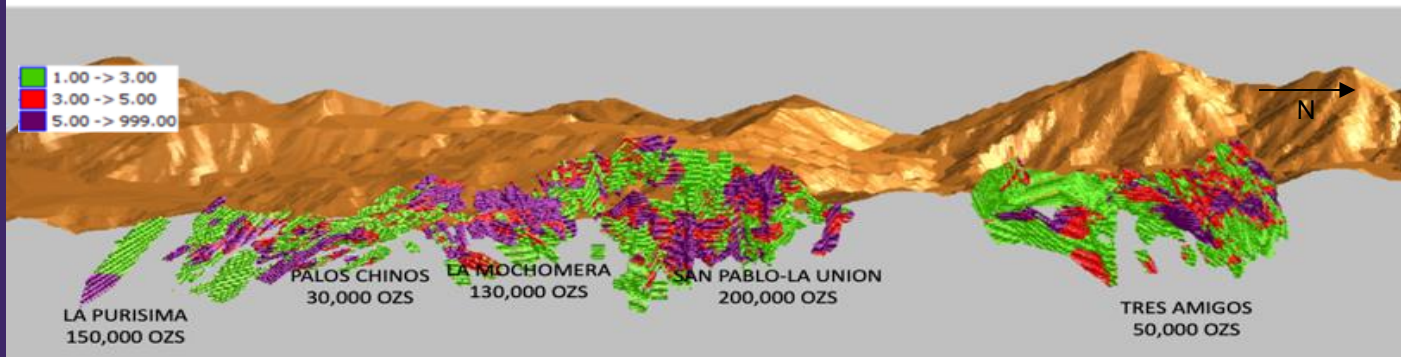
The Company's primary deposits under production consist of:

- Tres Amigos
- San Pablo: including San Pablo, San Pablo Sur, San Pablo Este, and San Pablo Viejo
- La Mochomera

The block models indicate the estimated gold grades as well as estimated mineable gold inventory by area.

Updated Mineral Resource Estimate targeted by end of Q1 2025

BLOCK MODEL RESOURCES 3D WEST VIEW

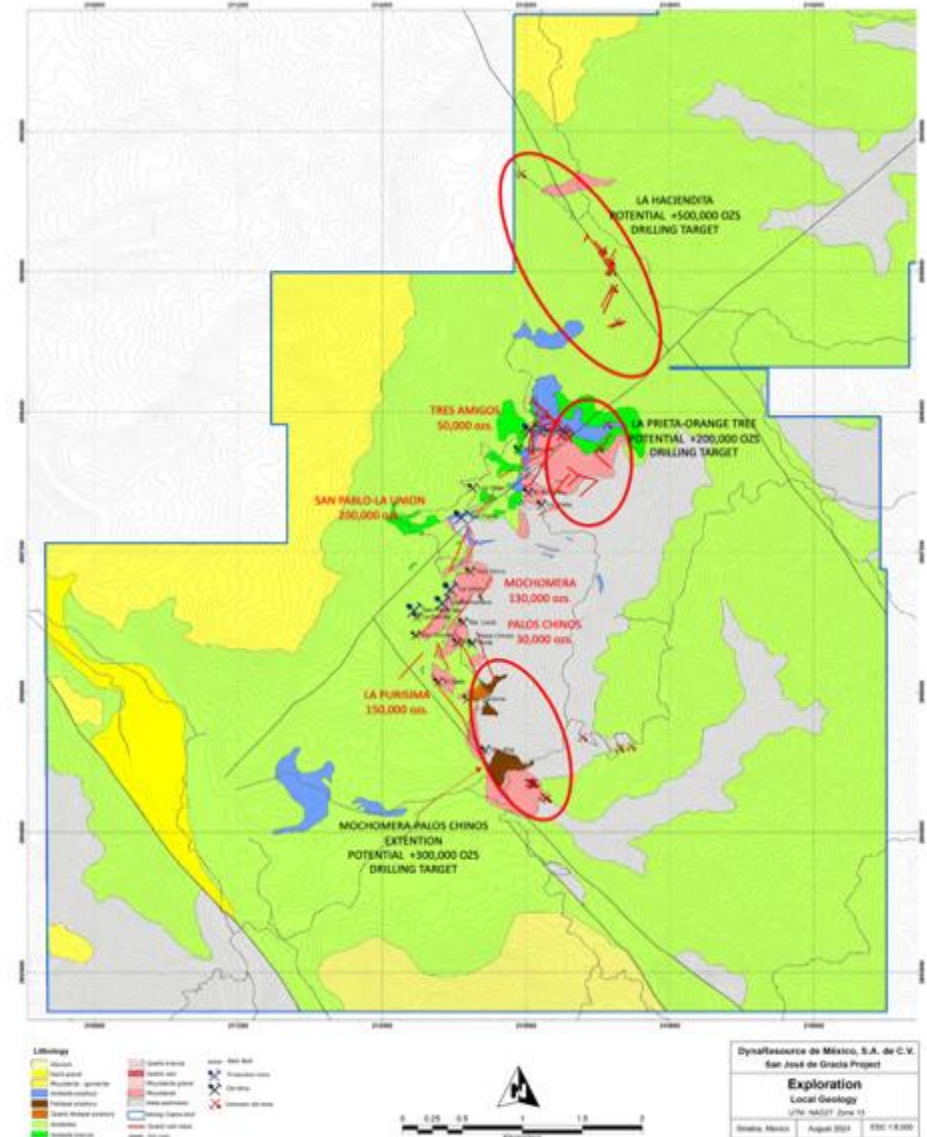
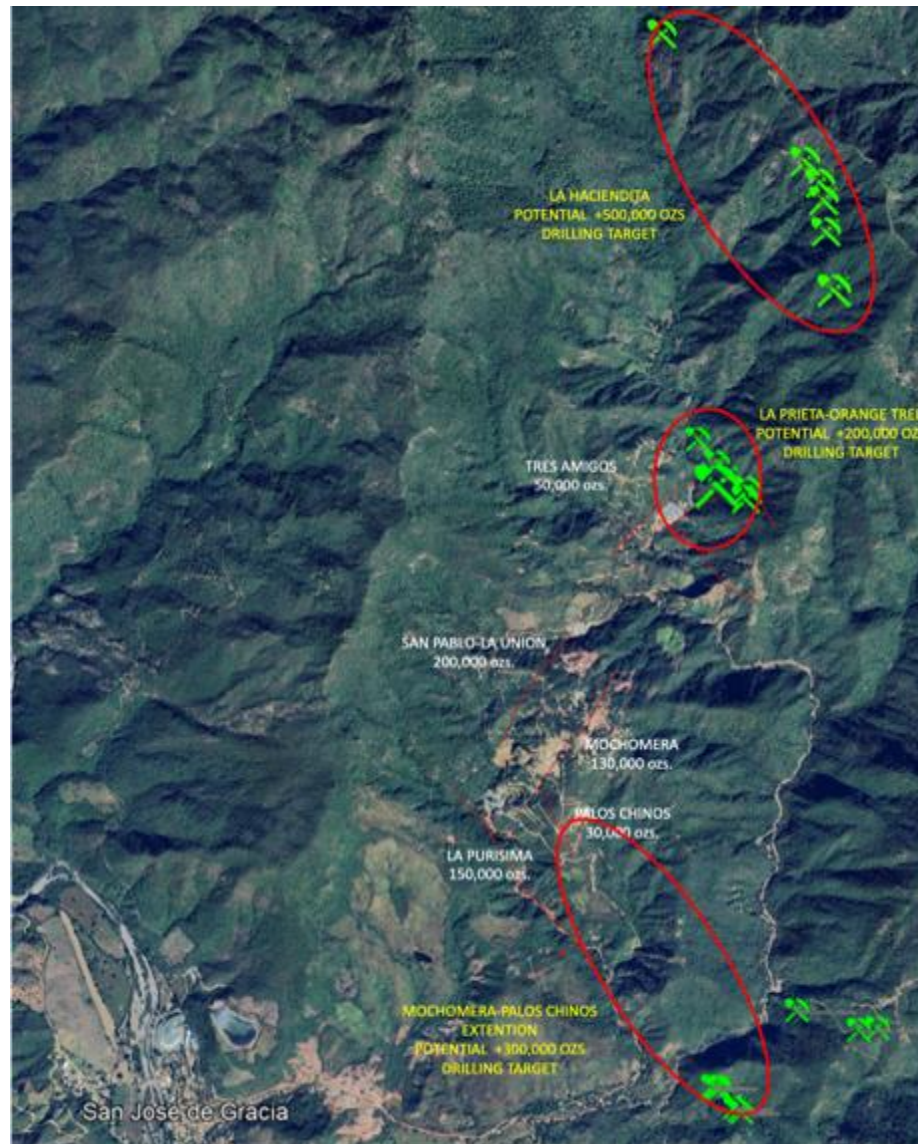


Geology – Near-Mine Growth Opportunity

1 Million Ounce Gold Exploration Potential

Estimated 1Moz gold exploration potential in near-mine and known targets.

Land package contains numerous additional targets.

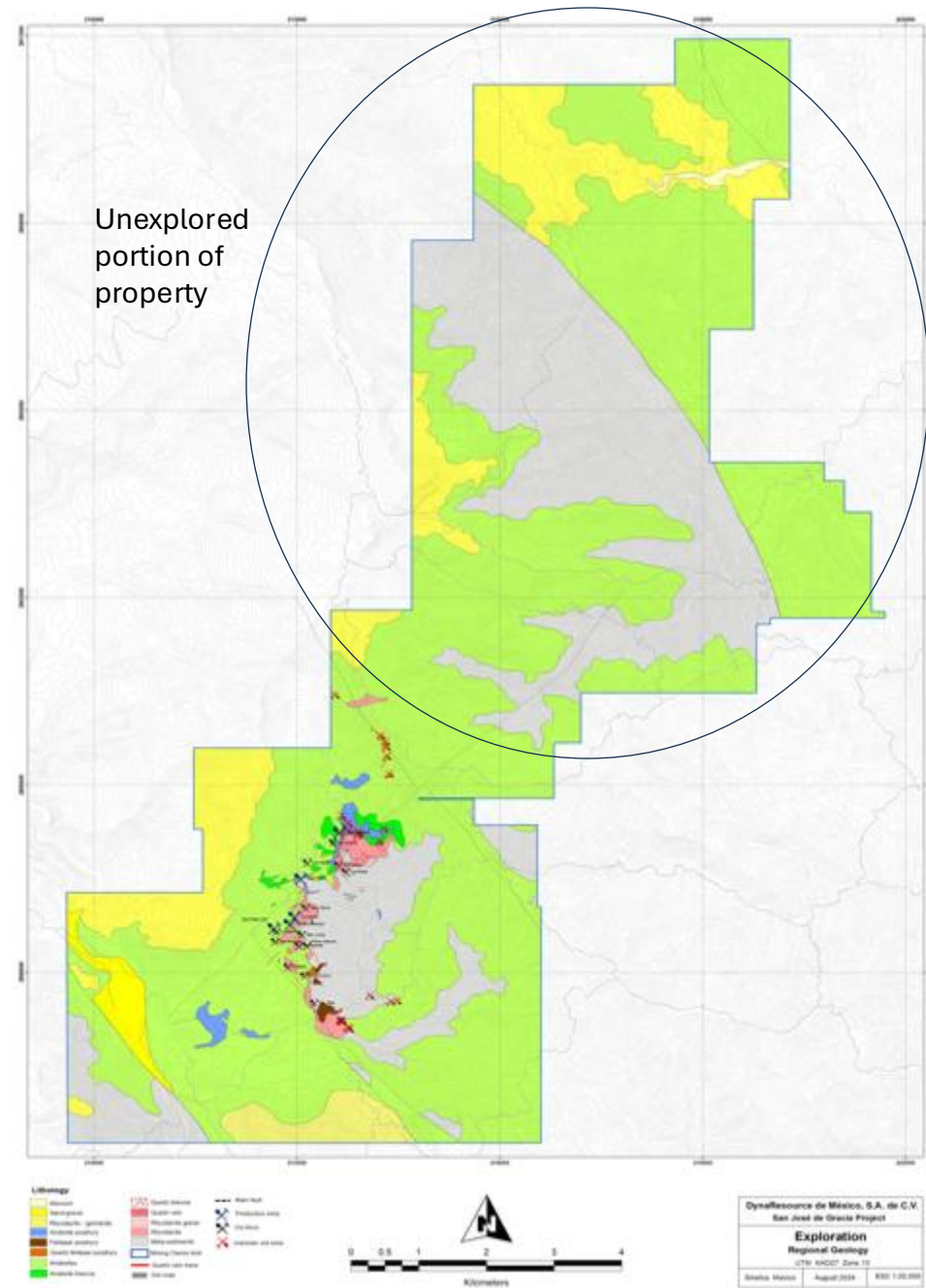


Regional Exploration/Resource Growth Potential

Underexplored Large Land Package with Multiple Known Targets

- Extensive land package still minimally explored
- Multi-million gold ounce potential
- Total drilling of over 120,000 meters to discover over 1Moz resource
- High success rate at the drill bit
- Discovery cost < \$20/oz Au

DRILLING SUMMARY					
YEAR	NUMBERS OF DH	COMPANY	METERS DRILLED	Avg. Mts/hole	TYPE
1992	11	Industrial Penoles	1,360.95	123.72	RC
1997	63	Golden Hemlock	6,088.77	96.65	CORE
2007	42	Dyna Resource Mexico	8,385.85	199.66	CORE
2008	84		21,756.02	259.00	CORE
2009	21		4,011.19	191.01	CORE
2010	92		21,965.09	238.75	CORE
2011	59		12,310.35	208.65	CORE
2021	11		1,905.40	173.22	CORE
2022	112		17,747.35	158.46	CORE
2022	43		5,056.50	117.59	UG-Core
2023	48		14,009.00	291.85	CORE
2024	29		6,644.50	229.12	CORE
Total	243			121,240.97	

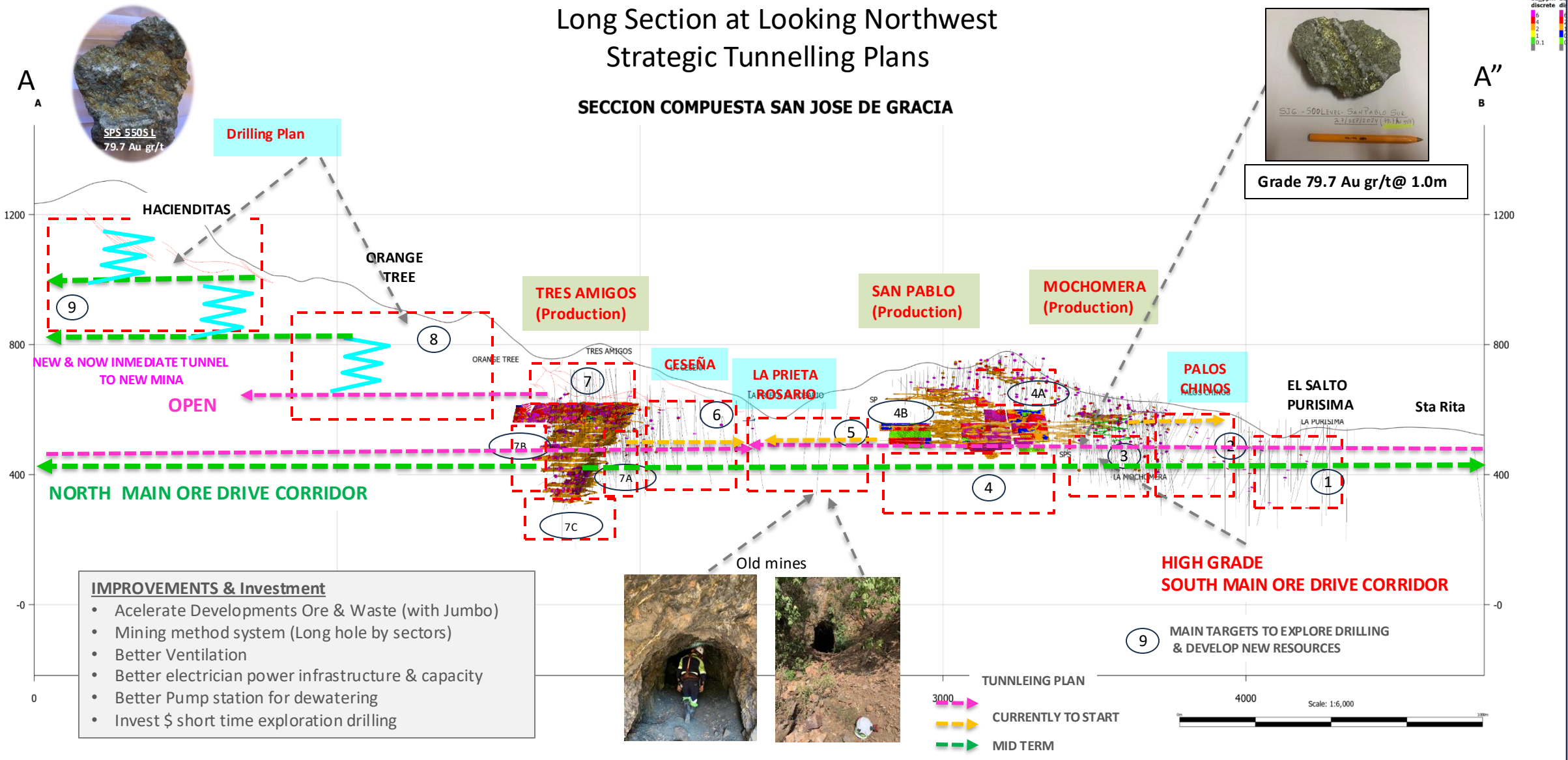


Regional Geology / Long Section

Targets New Potential and New Resources

Long Section at Looking Northwest Strategic Tunnelling Plans

SECCION COMPUESTA SAN JOSE DE GRACIA



- IMPROVEMENTS & Investment**
- Accelerate Developments Ore & Waste (with Jumbo)
 - Mining method system (Long hole by sectors)
 - Better Ventilation
 - Better electrician power infrastructure & capacity
 - Better Pump station for dewatering
 - Invest \$ short time exploration drilling



Capital Structure Overview

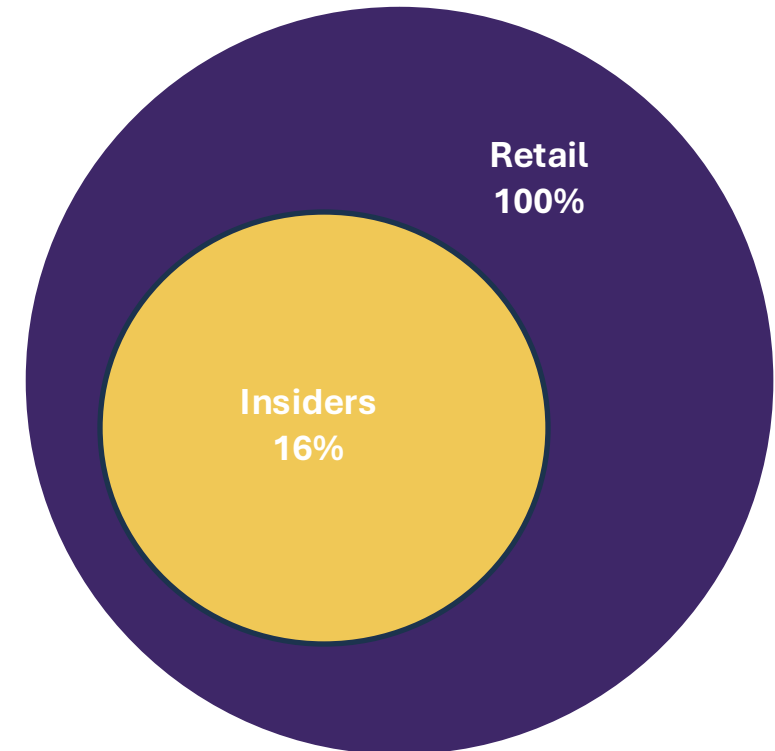
Capital & Ownership Structure



Capital Structure

Share Price <small>(As at February 25, 2024)</small>	\$1.08
Shares Outstanding	29.4M
Cash and Cash Equivalents <small>(As at September 30, 2024)</small>	\$1.3M
Market Capitalization	\$31.8M
Warrants + Options	2.0M
RSUs + DSUs	1.2M
Preferred Outstanding	5.3M
Fully Diluted Common Shares	38M

Ownership Structure

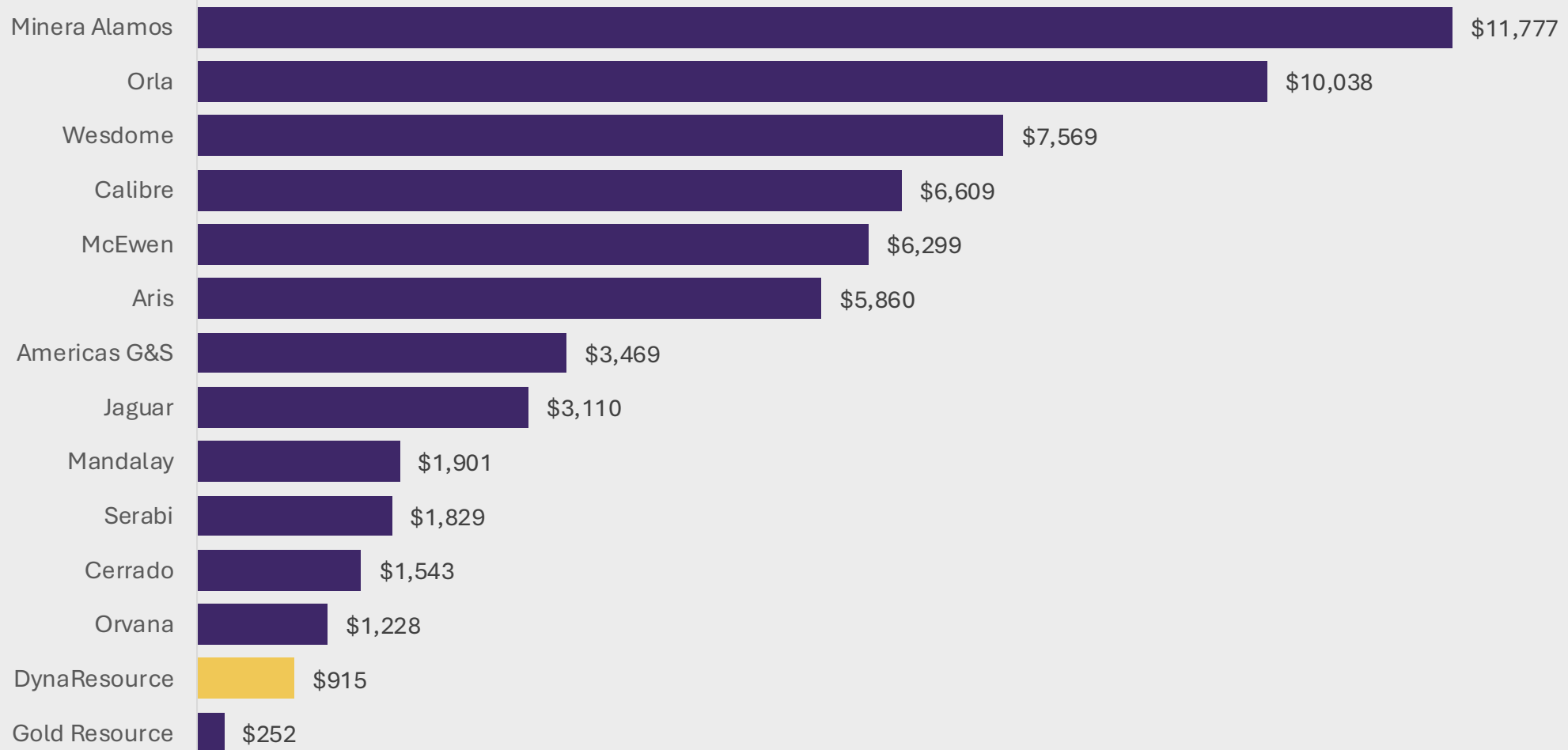


An Undervalued Gold Producer

Significant Rerating Potential



2024 E EV/Production (US\$/oz)



Source: Stockwatch, Company Reports

Leadership Team

Seasoned, New Management Team and Experienced Board



DynaResource Board of Directors & Management

- **Rohan Hazelton, President & CEO, Director** CPA, former Goldcorp and Cerrado Gold
- **Alonso Sotomayor, CFO** CPA, former KPMG, Deloitte, Cerrado Gold
- **Dave Keough, Interim COO**, +35 years experience with a Latin American focus, former Goldcorp, ex-COO Gammon Gold, Crocodile Gold and Goldrock
- **Luis Portugal, GM** Geologist, former Goldcorp, San Dimas
- **K.D. Diepholz, Chairman, Director** Founder of DynaResource
- **Dr. Quinton Hennigh, Director** CEO of San Cristobal Mining Economic Geologist, former Homestake, Newcrest & Newmont. Discovered 5.2Moz Au Springpole Deposit
- **Brent Omland, Director** CPA, Co-CEO of Ocean Partners UK Limited
- **Phillip Rose, Director** Golden Post Rail LLC Appointee
- **Dale Petrini, Director** Retired Engineer from Dow Chemical with 30 years international experience with Dow Chemical
- **Maria Virginia Anzola, Director** Resource Lawyer with +20 years legal experience in the extraction industry



San Jose de Gracia, Mexico



DYNARESOURCE

OTCQX: DYNR

Appendix



Production History

Gold Concentrate Production Summary (2016 -2024)



Production Highlights:

- Production began in 2016 with throughput rate of 100tpd growing to 850-900tpd in Oct 2024
- Gold production increased from 10,836 ounces in first year of production to 31,905 in 2022
- 2024 full year production of 25,677 ounces of gold

Year	Tonnes Milled	Grade Au g/t	Reported Recovery %	Au Ounced Produced	Au Ounces Sold	Revenue
2016	33,172	12.70	80.00%	10,836	8,668	9,496,105
2017	35,170	12.95	86.29%	12,636	10,740	10,850,091
2018	52,038	9.82	86.11%	14,147	13,418	4,053,181
2019	66,031	5.81	86.46%	10,646	9,713	11,612,721
2020	44,218	5.65	87.31%	7,001	5,828	9,048,831
2021	97,088	9.67	88.79%	26,728	22,566	35,886,046
2022	137,740	8.18	88.05%	31,905	25,554	39,767,459
2023	198,518	5.58	76.50%	27,252	24,829	35,494,635
2024	257,676	4.07	76.24%	25,678	21,969	47,880,011
	921,652	6.77	83.16%	166,828	143,284	204,089,081

Historical Mineral Resource Estimate

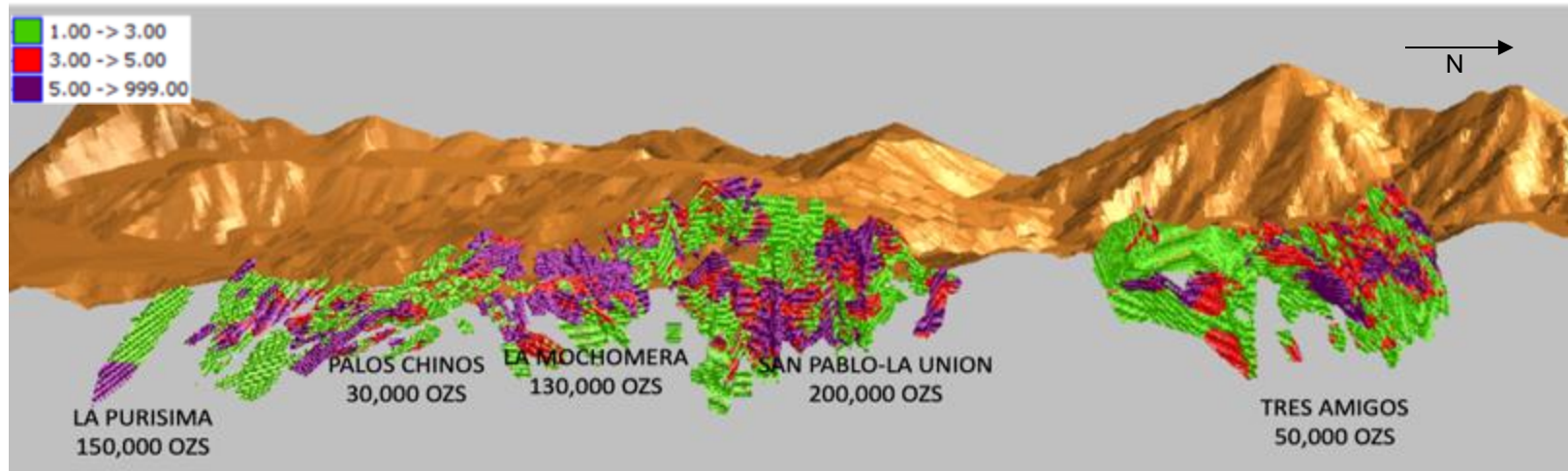
For the Primary Deposits of Tres Amigos, San Pablo, La Union and La Purisima

HISTORICAL MINERAL RESOURCE ESTIMATE

	Tonnes	Gold grade (g/t)	Oz gold	Silver grade (g/t)	Oz Silver
Indicated Resource:					
Tres Amigos	893,000	4.46	128,000	10.34	297,000
San Pablo	1,308,000	6.52	274,000	12.72	535,000
Total Indicated	<u>2,200,000</u>	5.69	<u>402,000</u>	11.75	<u>831,000</u>
Inferred Resource:					
Tres Amigos	1,453,000	6.05	282,000	11.01	514,000
San Pablo	532,000	6.02	103,000	11.33	194,000
La Union	849,000	6.11	167,000	13.71	374,000
La Purisima	1,119,000	5.25	189,000	5.63	203,000
Total Inferred	<u>3,953,000</u>	5.83	<u>741,000</u>	10.11	<u>1,285,000</u>

Mineral Resource Estimate published effective February 6, 2012 prepared by Servicios y Proyectos Mineros de Mexico SA de CV and Chlumsky, Armbrust & Meyer LLC.

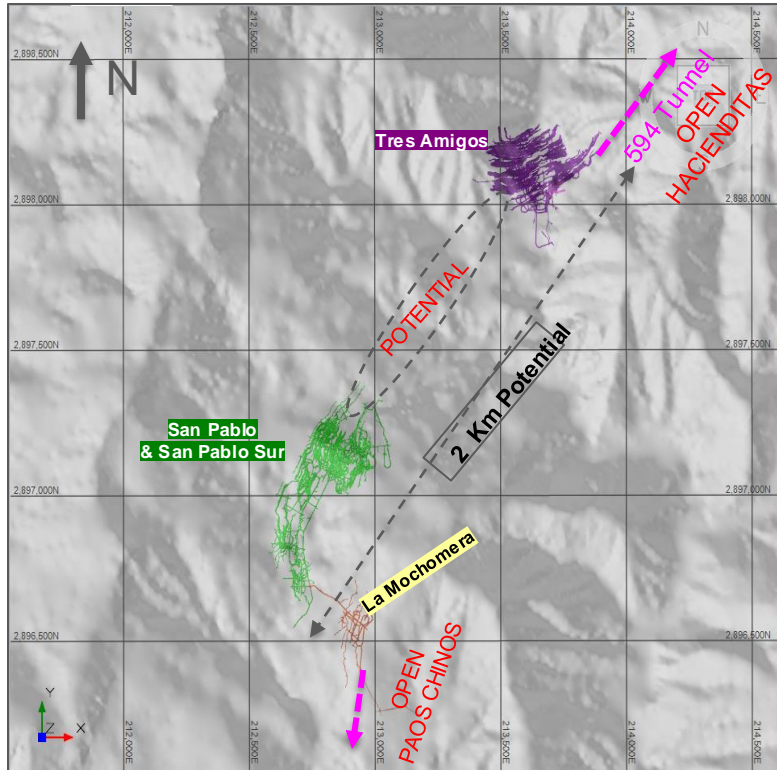
BLOCK MODEL RESOURCES 3D WEST VIEW



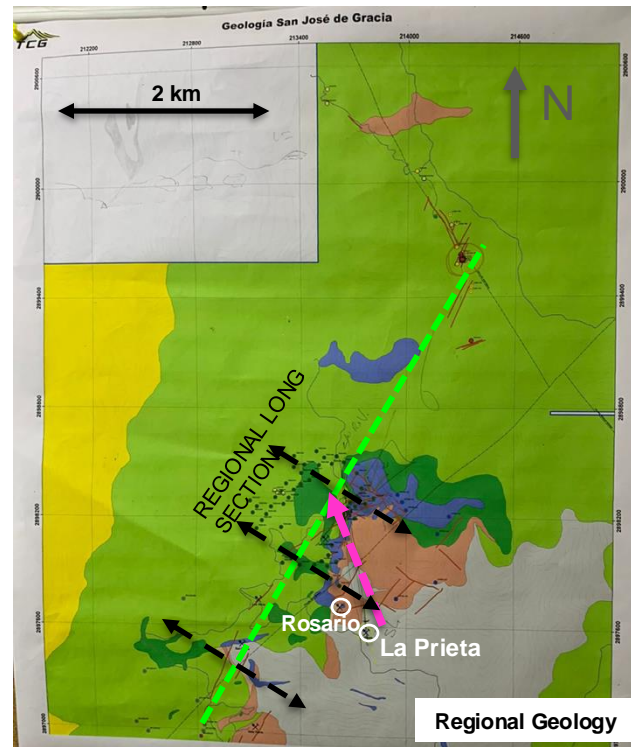
Regional Geology Map



La Prieta Conceptual Exploration Tunnel

Regional Potential

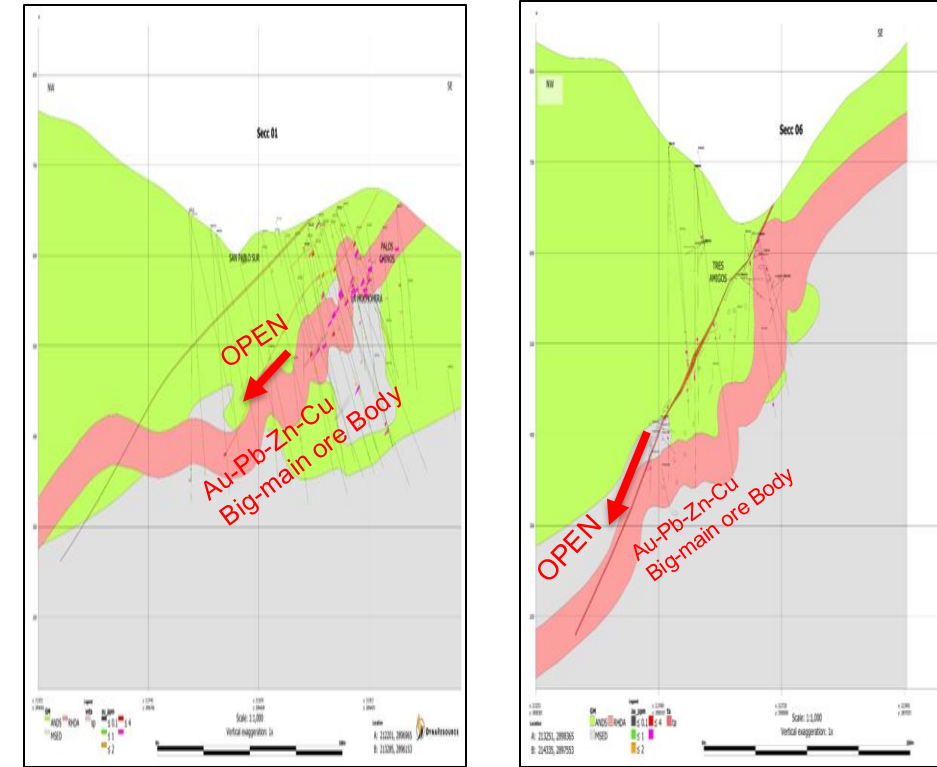


LA PRIETA CONCEPTUAL TUNNEL 600-700m



-  Main Tunnel New Portal (Main Direction)
-  Main Corridor

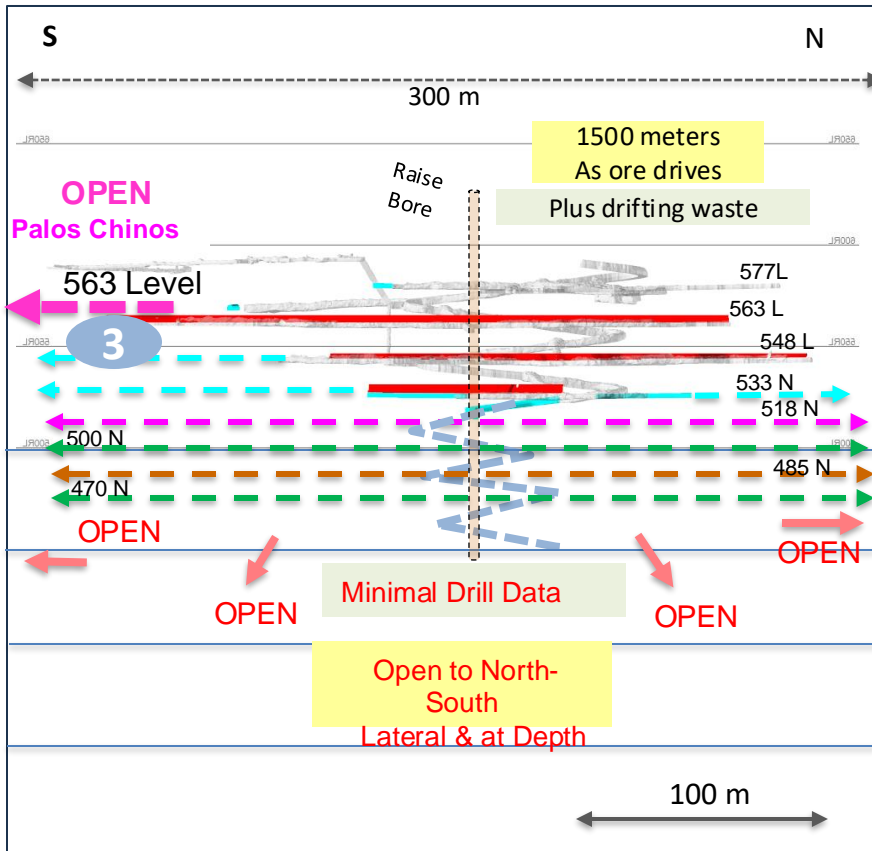
Cross Section Looking West



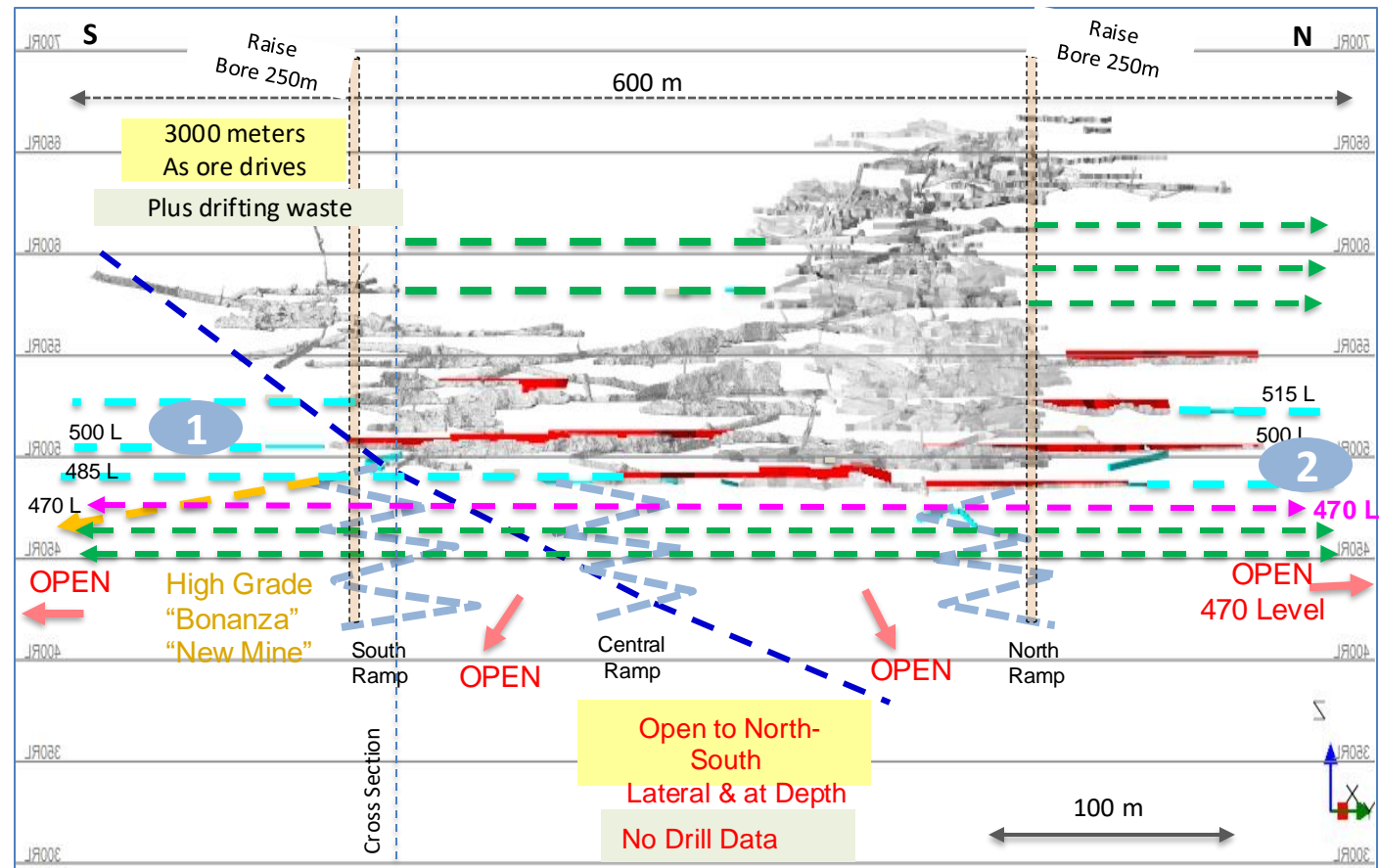
Main Ore Bodies Open at Depth

San Pablo & Mochomera Gold Potential

LA MOCHOMERA VEIN LONG SECTION



SAN PABLO VEIN LONG SECTION



- Short Time Ore drive
- Current Ore drive
- Mid Term Ore drive
- Current Waste Ramp
- Exploration Main Ramp to Open New South Area "New Mine"
- Open 485 Level From Cross Cut
- Stope Production
- Fault

Current High Grade zone
500 South Level

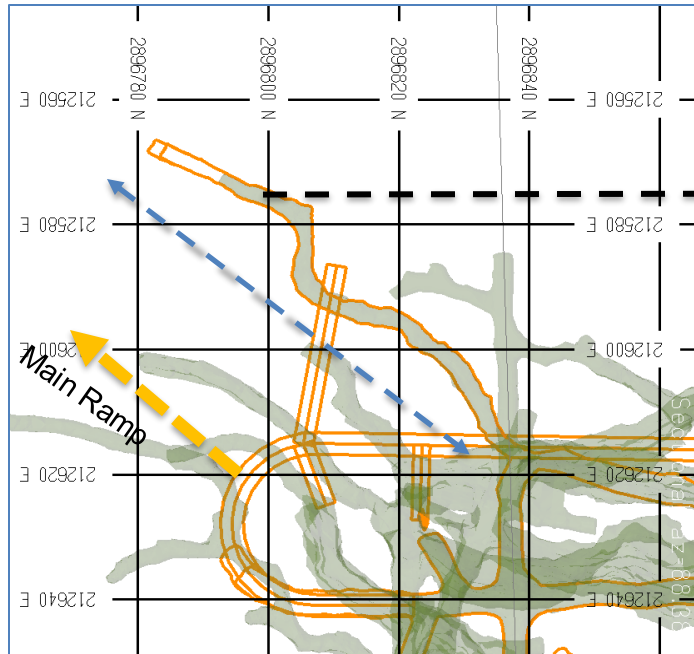


San Pablo Mine 500 South Level

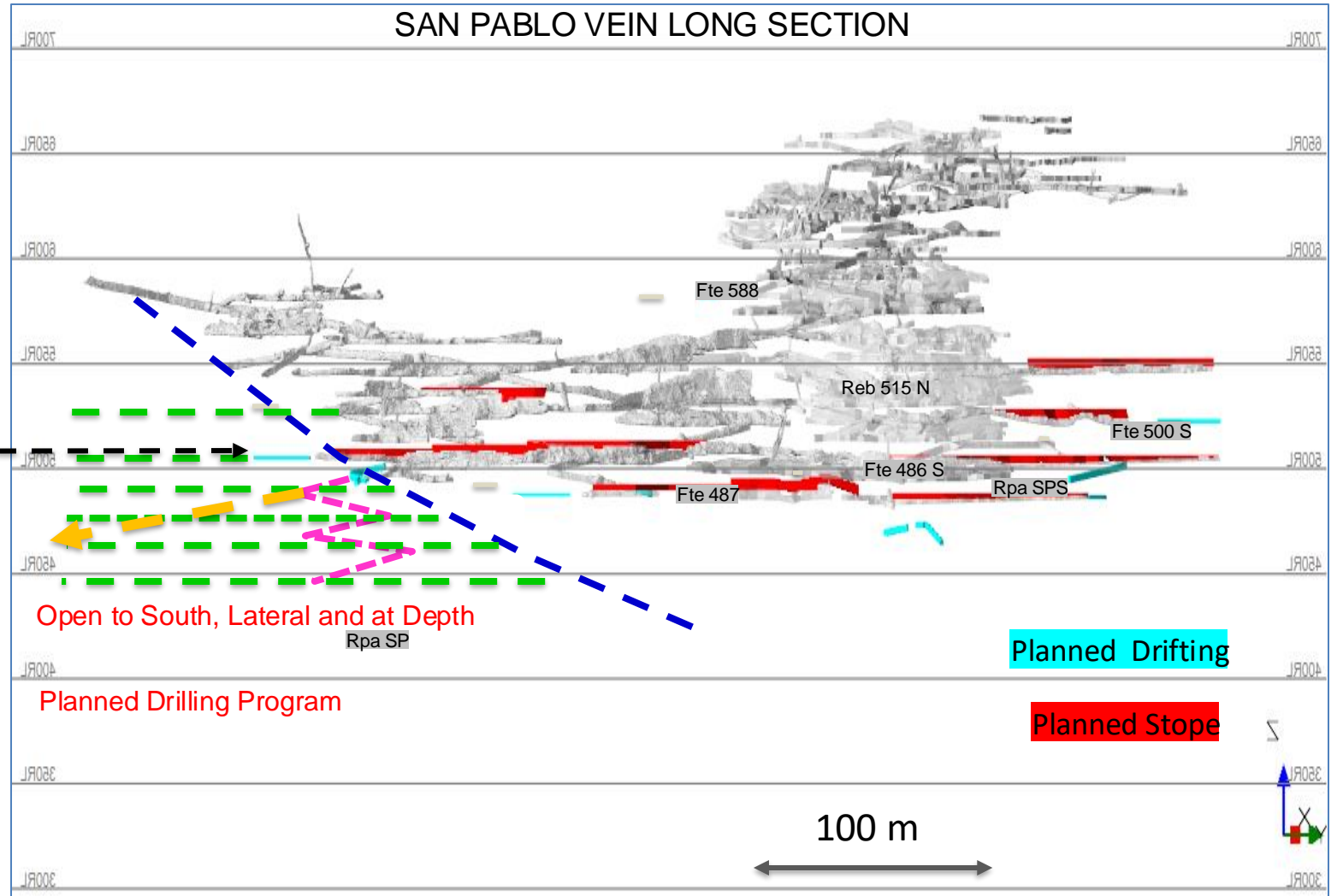
500 South Level
Demonstrating High
Grade "Bonanza" Potential



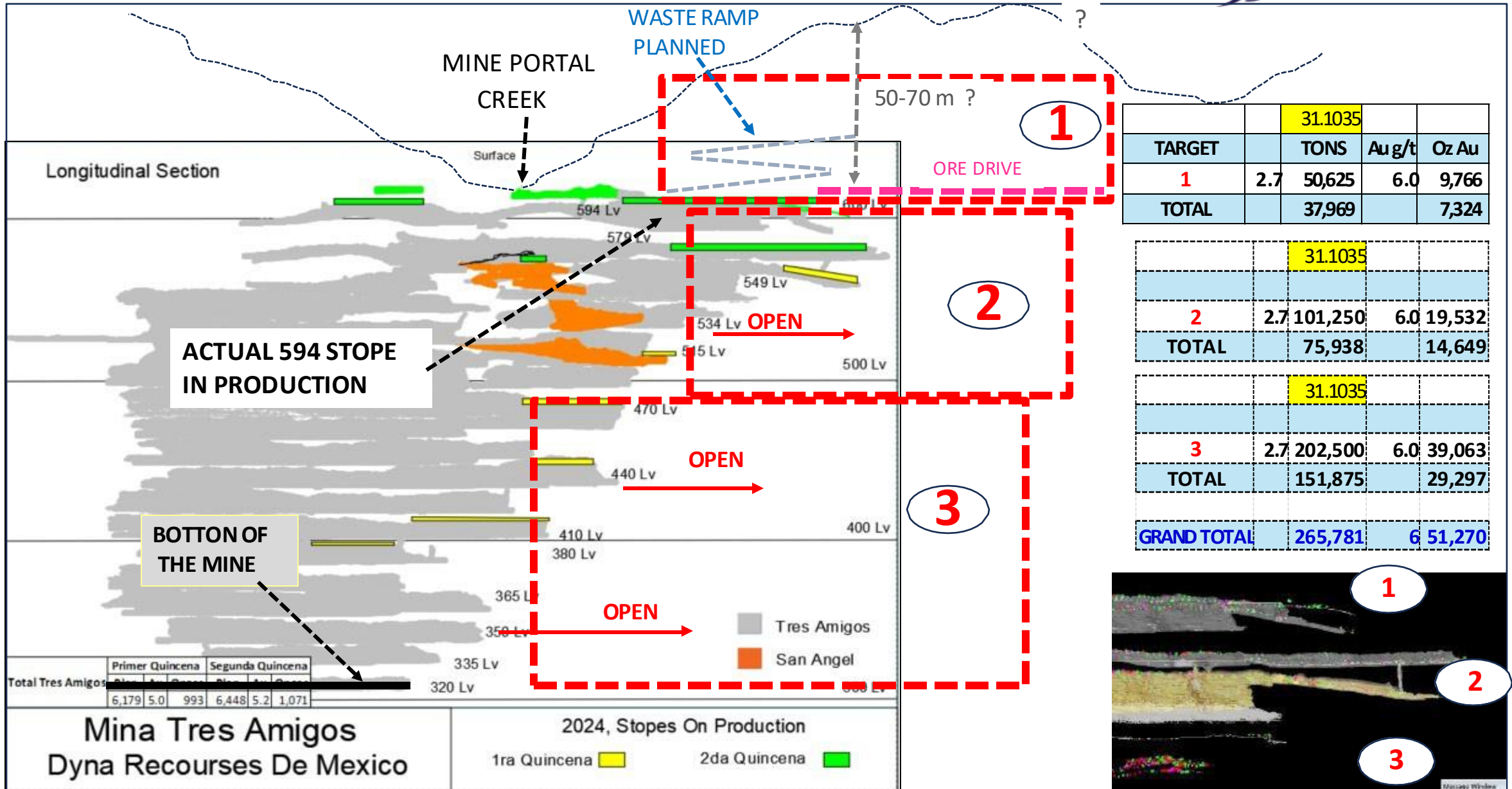
PLAN VIEW



Current Stope 70m long - Potential Still Open



Example Tres Amigos Potential - Targets

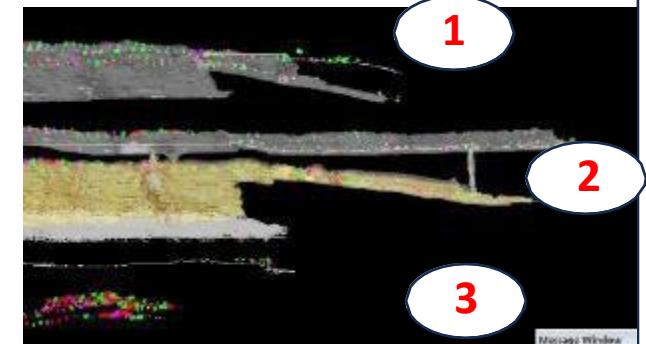


TARGET	TONS	Aug/t	Oz Au
1	2.7 50,625	6.0	9,766
TOTAL	37,969		7,324

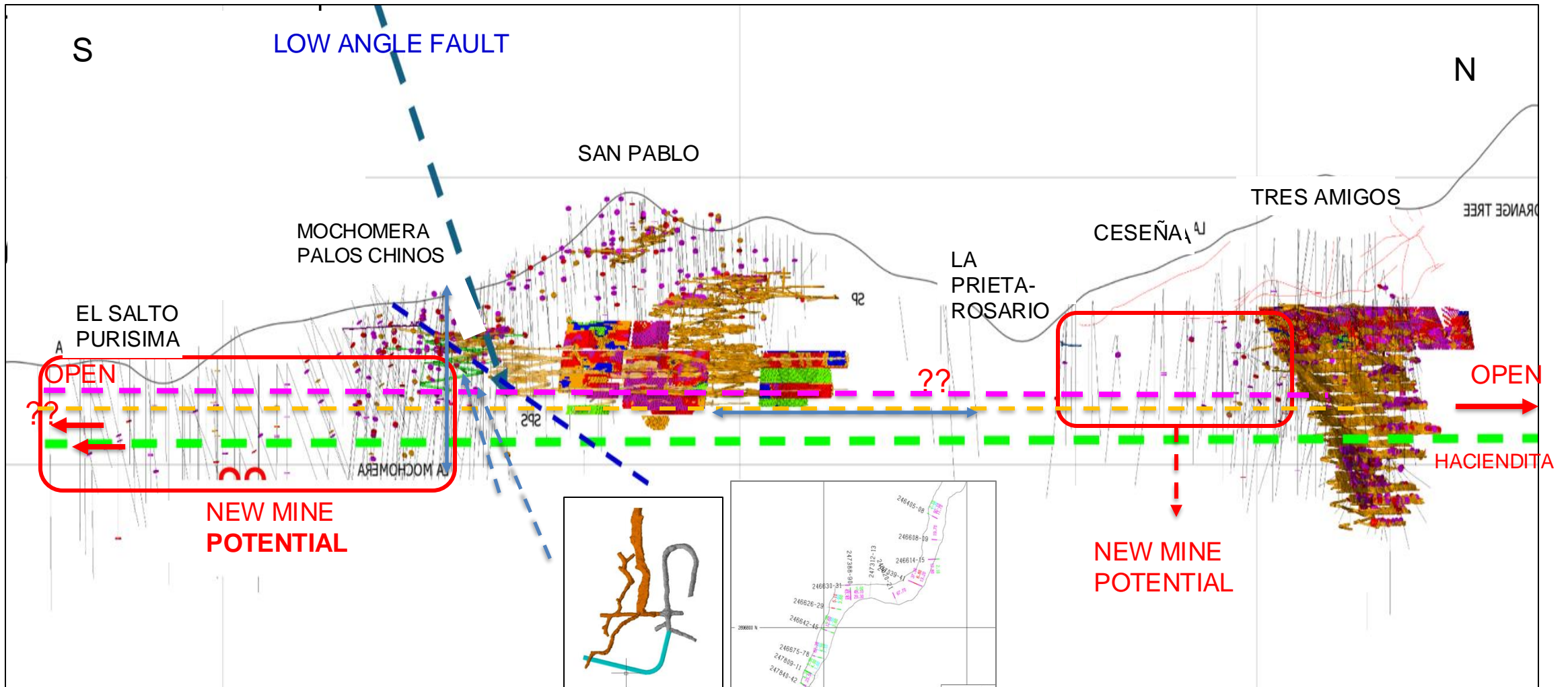
TARGET	TONS	Aug/t	Oz Au
2	2.7 101,250	6.0	19,532
TOTAL	75,938		14,649

TARGET	TONS	Aug/t	Oz Au
3	2.7 202,500	6.0	39,063
TOTAL	151,875		29,297

GRAND TOTAL	265,781	6	51,270
--------------------	----------------	----------	---------------

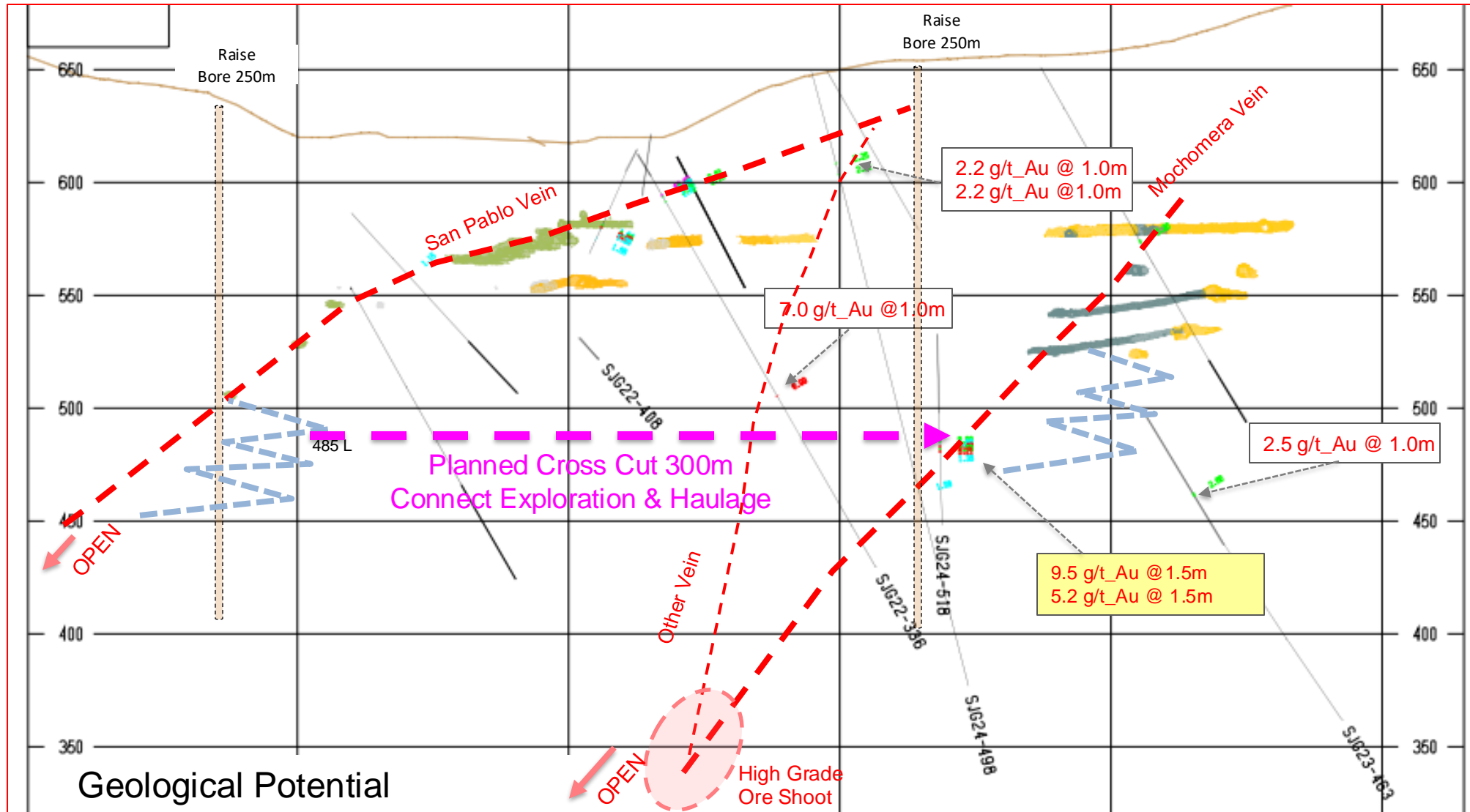


LONG SECTION LOOKING WESTERN



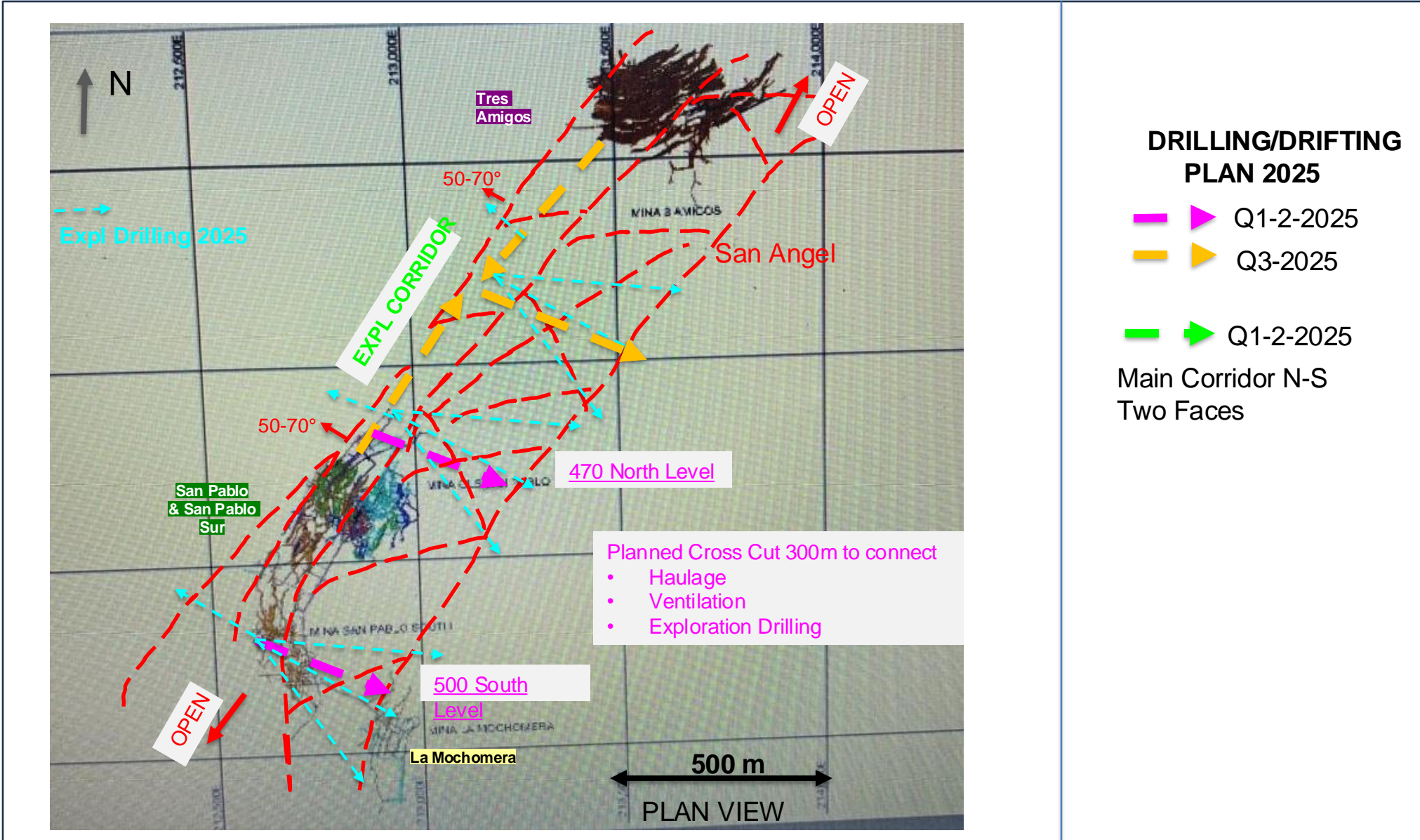
Cross Section

Geological Model



Regional Geology

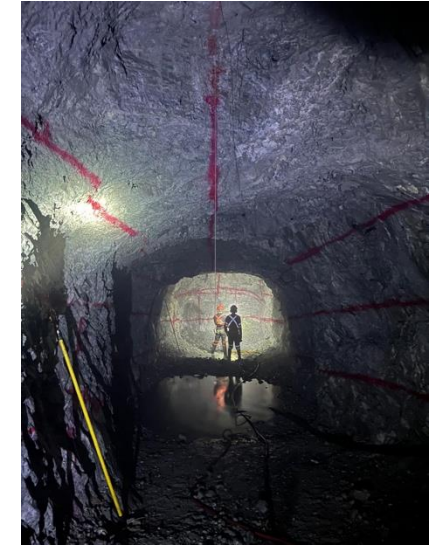
UG Mine Model to Explore



Grade Control

Instituting Operational Discipline

- Demarcation lines for topographical control prepared by Geology Dept.
- Drill and blast lines clearly marked
- Lines to demarcate mucking boundaries



Long Hole Stopping

New Long Hole Stopping for Specific Mine Areas

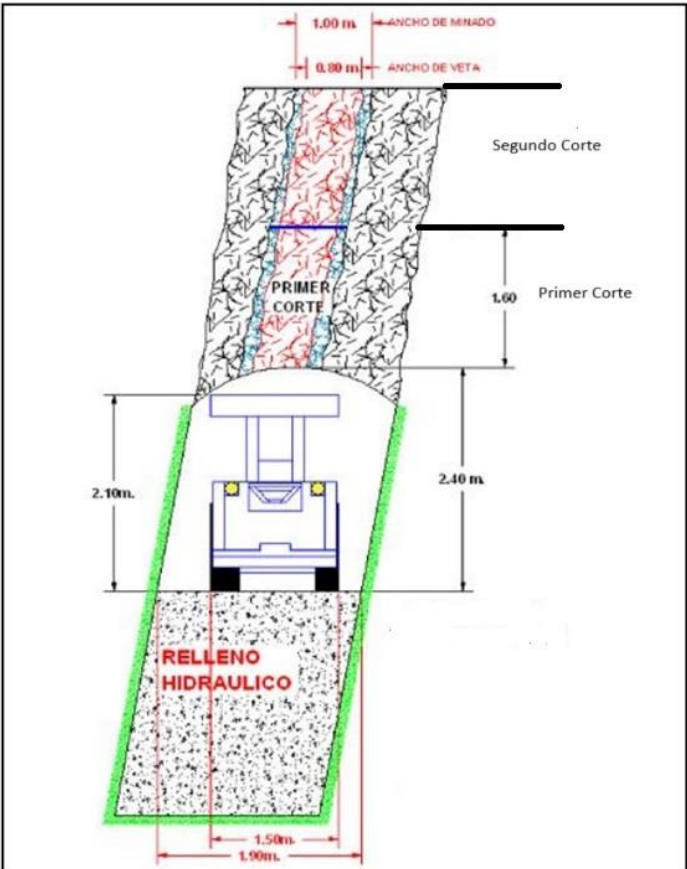
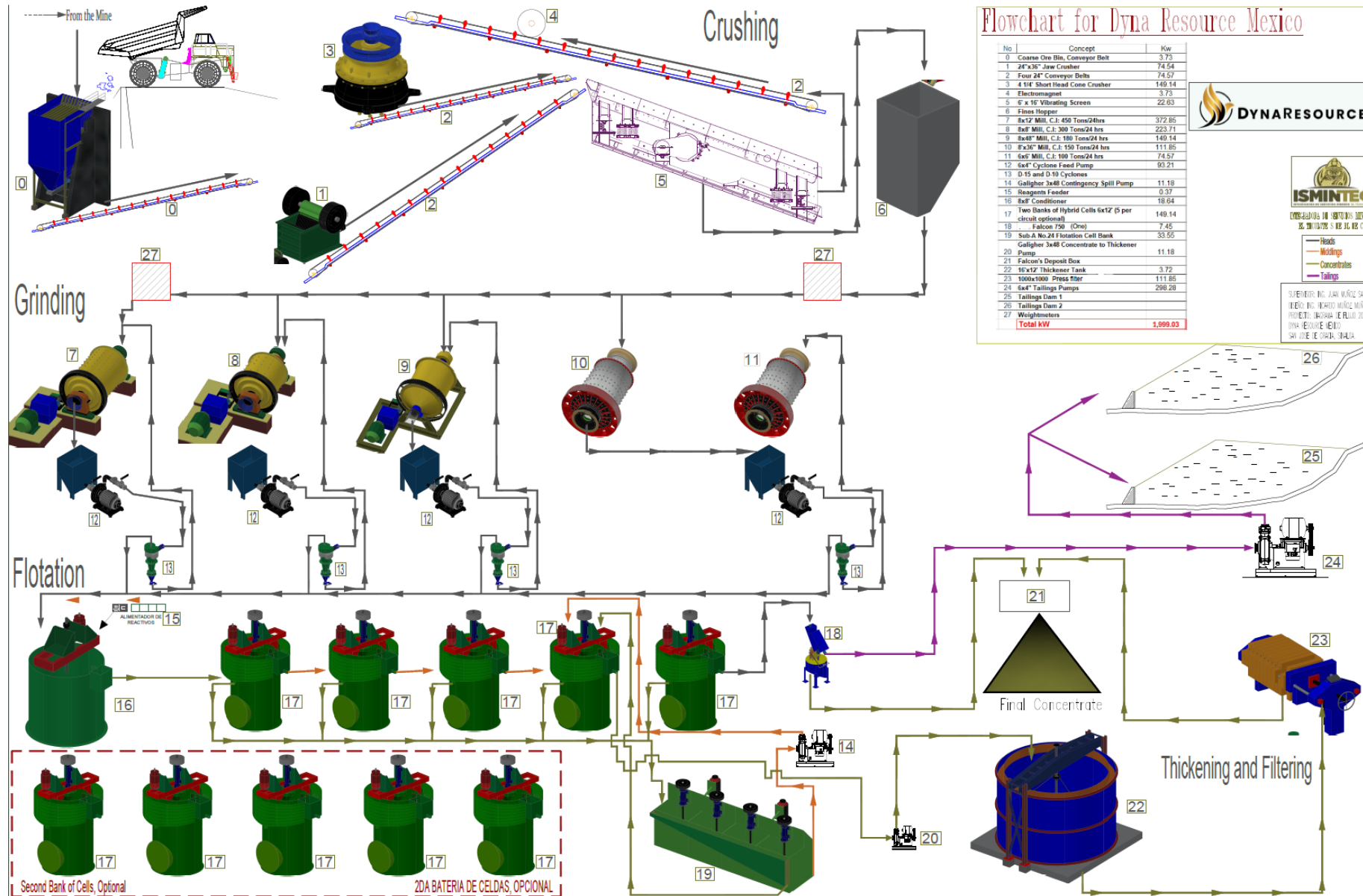


Figura 27: Operación de avance y relleno hidráulico

Fuente: Elaboración propia.



Mill Flow Sheet 900 tpd Flotation Concentrate Circuit



Flowchart for Dyna Resource Mexico

No	Concept	Kw
0	Coarse Ore Bin, Conveyor Belt	3.73
1	24"x36" Jaw Crusher	74.54
2	Four 24" Conveyor Belts	74.57
3	4 1/4" Short Head Cone Crusher	149.14
4	Electromagnet	3.73
5	6' x 16' Vibrating Screen	22.63
6	Flux Hopper	
7	8x12' Mill, C.I. 450 Tons/24hrs	372.85
8	8x8' Mill, C.I. 300 Tons/24 hrs	223.71
9	8x8' Mill, C.I. 180 Tons/24 hrs	149.14
10	8x26" Mill, C.I. 150 Tons/24 hrs	111.85
11	6x6' Mill, C.I. 100 Tons/24 hrs	74.57
12	6x4" Cyclone Feed Pump	93.21
13	D-15 and D-10 Cyclones	
14	Galigher 3x48 Contingency Spill Pump	11.18
15	Reagents Feeder	0.37
16	8x8' Conditioner	18.64
17	Two Banks of Hybrid Cells 6x12' (5 per circuit optional)	149.14
18	Falcon 750 (One)	7.45
19	Sub A No.24 Flotation Cell Bank	33.55
20	Galigher 3x48 Concentrate to Thickener Pump	11.18
21	Falcon's Deposit Box	7.45
22	16'x12' Thickener Tank	3.72
23	100x1000 Press Filter	111.85
24	6x4" Tailings Pumps	298.28
25	Tailings Dam 1	
26	Tailings Dam 2	
27	Weightmeters	
Total kW		1,899.03

Legend:
 - Heads (Red)
 - Middings (Green)
 - Concentrates (Blue)
 - Tailings (Purple)

Logos: ISMINTEC, DYNARESOURCE

Text: SUBSISTEMAS DE JARAS WANG SANCHEZ, INGENIERIA DE REACTORES QUIMICOS, PROYECTO MINERO DE PLATA 2004, DYNARESOURCE MEXICO, SAN JOSE DE GRAMA, GUANAJUATO



DYNARESOURCE

CORPORATE OFFICE:

The Urban Towers

222 West Las Colinas Blvd

Suite 1910 North Tower

Irving Texas 75039

CONTACT:

Investor Relations

E: info@dynaresource.com

T: (972) 869-9400

